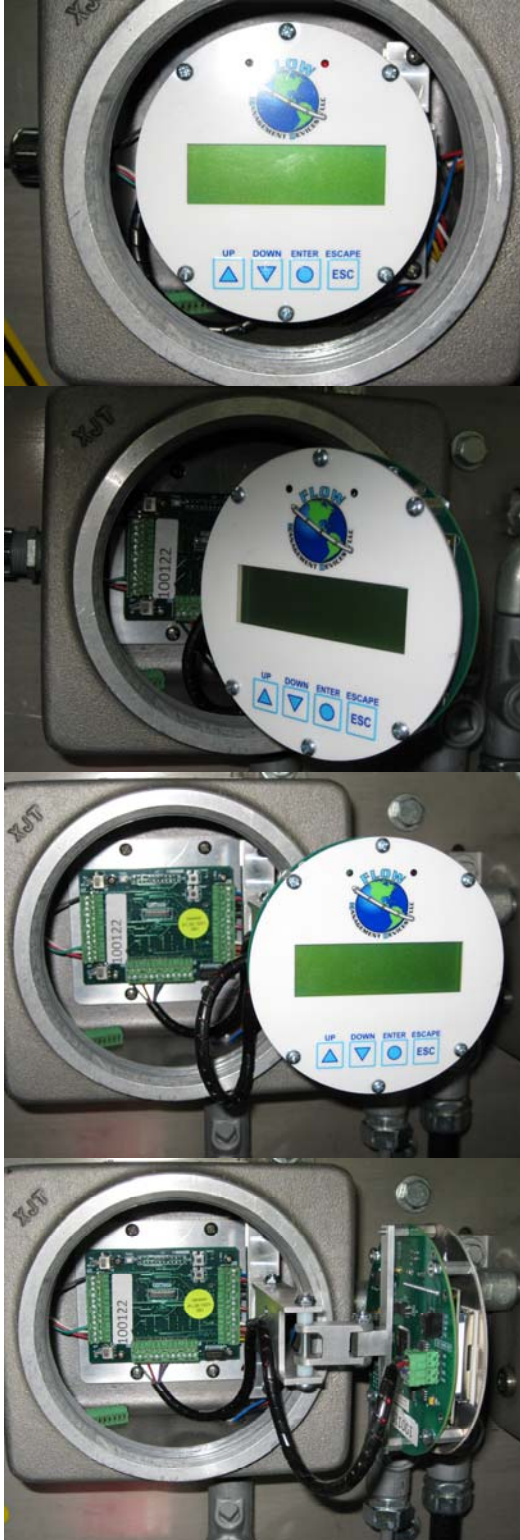




Prover Interface Module (PIM)



Features Include

- *Low Power (3 Watts nominal)*
- *Input power from 11 to 26 Volt Power Supply)*
- *Status code display with red and green LED's*
- *Fully configurable variable, including time factors using PC via serial port or local keyboard*
- *Direct reading for configured volume(s) with timing displayed in seconds or microseconds*
- *Four status / diagnostic outputs to host flow computer*
- *Prover cycle counter with programmable limits provide preventative maintenance planning*
- *Timer provides accurate elapsed time between optical switches*
- *Intrinsic safe design*
- *Loop-Back signal verification of volume output pulses on host flow computer*
- *25 MHz processor with;*
 - *2 serial ports*
 - *Counters*
 - *64KB flash memory*
 - *32KB external memory with 10 year expected life battery back-up*
- *Communication Ports:*
 - *RS-232*
 - *RS-485*
- *Local and or Remote display with Keyboard entry via RS-232 or RS-485*
- *Built in Water Draw Mode*
- *Adjustable motor power off delay*
- *Adjustable pulse input and output signal level for flow computer adaptability*
- *Compatible with other Provers*

Superior Design
In
Flexibility and Functionality